

**CASCADE RAMBLER CLUB
CHAPTER OF AMCRC
MEMBERSHIP APPLICATION FORM**

Name _____ Spouse/SO _____

Address _____

City _____ State _____ Zip _____

Home Phone _____ Email Address (optional) _____

\$15 for Cascade Rambler Chapter membership.

Options: To add National membership to your local membership select one of the following:

\$24.00 U.S. (\$26.00 U.S., Canadian addresses) for 4 Rambler Readers, 4 Ad Releases and 1 Parts Source Guide

\$32.00 U.S. (\$35.00 U.S., Canadian addresses) for 4 Rambler Readers, 12 Ad Releases and 1 Parts Source Guide

Total local and National dues enclosed: _____

Please make checks payable to **Cascade Rambler Club** and mail to:

Mike Howard, Treasurer
Cascade Rambler Club
17765 204th Ave NE
Woodinville, WA 98077-8818

Cascade Ramblers Club has a registry of cars in the club. To create this registry we need to collect data on and about your car(s) such as the vehicles VIN and body identification plate information. We do not use the data in any way that will share any personal information about you.

This information allows us to perform queries that will tell us how many of a particular car, engine, etc. exist in the club. We can even look for cars that were near each other on the assembly line! The data we collect will allow the use of more standardized descriptions of the cars in our roster. This will improve the look and commonality of our roster and our club photo pages. We know that collecting the data can be a daunting task if you have multiple cars. If you choose not to supply the data we understand, but we hope you will take the time to do so. Thank you!

Guide to locating Body ID plate by year and model: Find your year and model and its corresponding location code. The legend at the bottom of the table will tell you based upon the location code where the Body ID plate is located.

Year	01 American/Hornet	10 Classic/Rambler 6	20 Rebel	30 AMX	40 Gremlin	50 Marlin	60 Pacer	70 Javelin	80 Ambassador
Pre-58	F (All models including Nash)								
1958	F	J	J						J
1959	F	J	J						J
1960	F	J	J						J
1961	J	J							J
1962	J	J							J
1963	J	D							D
1964	D	D							D
1965	D	D				D			D
Post-1965	D (All models)								

LEGEND:

F = FIREWALL, ENGINE COMPARTMENT PASSENGER SIDE

J = DRIVERS DOOR JAMB, BETWEEN DOOR HINGES

D = DRIVERS DOOR AFT END, BELOW LATCH

Instructions:

General information about car: Input the year, model, engine size (cubic inches) and overall mileage.

Transmission codes: Select from the table the number that corresponds to the transmission type and shifting arrangement.

Body ID plate: Use the guide above to locate the Body ID plate. Input the information on the body plate in the appropriate fields.

Note: Models with location code 'F' typically will not have a 'Sequence' number. Models with location codes 'J' and 'D' will typically have 'sequence' numbers. Sequence numbers starting in 1961 start with **E** or **W** designating east or west assembly line.

Vehicle identification number (VIN): Locate your VIN number plate and input the number in the VIN field.

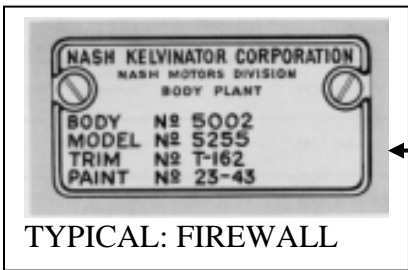
Engine identification (date build code): Use the pictures and their descriptions to locate the engine code for your engine. Input the information in the engine code field.

Notes: 6 cylinder engines. The number is stamped, not cast, into the machined surface. Many times the block will have to be cleaned of rust, dirt, grease, etc. to be able to read the number. A flashlight helps to illuminate the numbers.

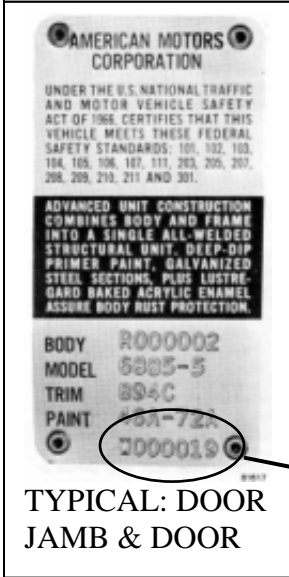
V-8 engines: The number is stamped into a plate that is screwed or riveted to the engine. Many times the plate will have to be cleaned of rust, dirt, grease, etc. to be able to read the number. A flashlight helps illuminate the numbers.

Notes: If the car is a parts car please note so. If the car has been named please put the cars name in the notes field.

AMC addict run out of room? Please make a copy of the table or use the back for additional space.



TYPICAL: FIREWALL



TYPICAL: DOOR JAMB & DOOR

No sequence

BODY ID PLATES

Sequence number

Transmission codes:
 1 = 3 speed manual, column shift
 2 = 3 speed manual, column shift, w/ OD
 3 = 3 speed manual, floor shift, w/ OD (Twin Stick)
 4 = 3 speed automatic, push button control
 5 = 3 speed automatic, column shift
 6 = 3 speed automatic, floor shift
 7 = 4 speed automatic, column shift
 8 = 4 speed manual, floor shift
 9 = 5 speed manual, floor shift



VIN, Typical: Located on right front spring tower next to fender bolt flange (all to 67). Located on dash @ base of windshield left side (68 to 87)

ENGINE IDENTIFICATION
 The engine code number is located on a machined surface on the upper left corner of the engine block.

195.6 F head, OHV 6, Aluminum 6

290-401 V-8. Located on front of right valve cover

199, 232, 258. Located on machined surface of block by distributor

287-327 V-8. Located on generator or alternator bracket by distributor

	Year	Model	Engine size	mileage	Trans	Body	Model	Trim	Paint	Sequence	VIN	Engine Code	Notes:
example	1966	Marlin	327	127500	5	R009684	6659-7	697Q	20A	W053557	A6KA97U100757	711F22	
1													
2													
3													
4													
5													
6													
7													
8													
9													
10													